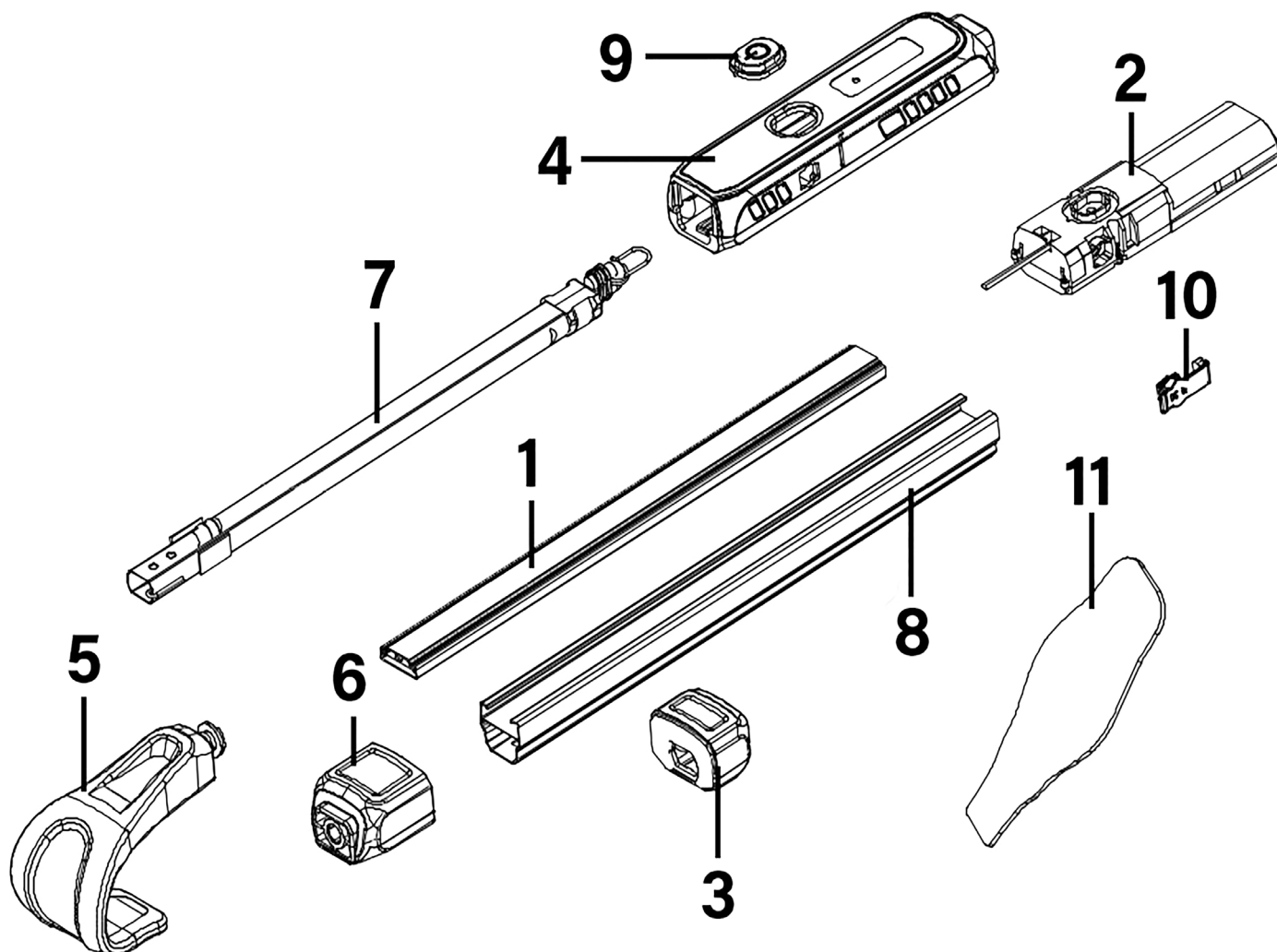


Parts Information: Under-Bonnet Cordless Rechargeable Light 10W SMD LED 1000lm Model No: LED138



Item	Part No.	Description
1	LED138.01	Clear Lens (c/w PCB)
2	LED138.02	PCB, Control Board, 135 X 40mm, c/w Battery
3	LED138.03	Connector
4	LED138.04	Handle
5	LED138.05	End Hook
6	LED138.06	Attachment Clamp for Hook
7	LED138.07	Telescopic Tube

Item	Part No.	Description
8	LED138.08	Aluminium Housing
9	LED138.09	Switch Button
10	LED138.10	USB Charging Port Cover
11	LED138.11	Bonnet Protection Cover
--	LED138.12	Mains Charger UK 5V DC 1A (Not Shown)
--	LED3602G.41	Micro USB to USB Cable, 920mm (Not Shown)

NOTE: It is our policy to continually improve products and as such we reserve the right to alter data, specifications and component parts without prior notice. There may be alternative versions of this product, please contact us should you require this information.

IMPORTANT: No liability is accepted for incorrect use of product. Spare parts must be fitted by a competent person

WARRANTY: Guarantee is 12 months from purchase date, proof of which will be required for any claim.